

GALLIARD TO READES 6 PAVEN (Richard Reade)

Treble violin

Part reconstructed by Ian Gaskell

Tenor recorder CUL MS Dd.5.21 f.9v

Only one flat in key signature in source

Bar 20: Items 1 & 2 are dotted crotchet and quaver in source

Bar 23: Item 1 is note C tied over from previous bar in source

Bass viol

Part reconstructed by Ian Gaskell

Lute CUL MS Dd.3.18 f.27r

No change

Cittern

Part reconstructed by Ian Gaskell

Bandora

Part reconstructed by Ian Gaskell

Galliard to Reades 6 paven

Richard Reade

Treble violin

Recorder

Bass viol

Lute

Lute tab

h	f	d	c	a	a	e
		a	a	a	b	a
			c	c	c	c
		a		a		

Cittern

Bandora

Bandora tab

b	a	.	b	a	
d	c			c	
c	c	d			c
a	a	a		a	

	h	d	a	a	a	

	a	b	d	a					
d							d	d	b
c					c		c	c	c
a				a			a	a	a

5

h	h	c	f	d	d	c	a	a	e	a
i	a	a	a	a	a	a	a	a	d	a
										b
										c
										a

b	b	a	b	a	d	d	c	d	d
d	a	a	a	a	d	d	c	d	d
c					d	c	c	c	c
a					b	a	a	a	a

d	a	h	d	c	a	l	h	d	c	a	e
a					a					a	e

b	b	a	c	d	a	b	b	d	a	c	
c	c	b		d	d	b	c	c	d		
a	a	a		c	a		a	a	a		
		d			d		a	a	a		

h	i	l	h	i	f	d	d	c	a	a	c	e	f	e	d	a
						a	b									a
						a										c
						d			a							a

a	a	.	b	d	d	d	c	d	d	d
b	b		b	a	d	d	c	d	c	d
c	a		c	a	c	c		a	c	a
a	a		d	a	a	c		a	a	c

Treble violin

Galliard to Reades 6 paven

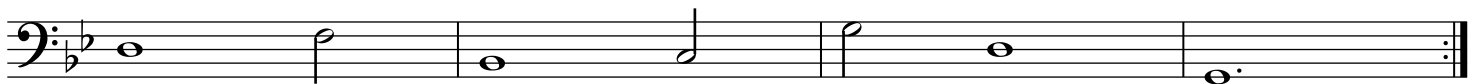
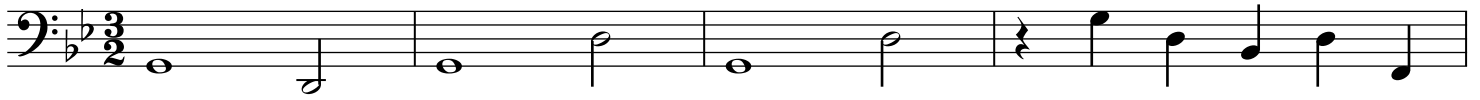
Richard Reade



Bass viol

Galliard to Reades 6 paven

Richard Reade



Galliard to Reades 6 paven

Richard Reade

Handwritten lute tablature for 'Galliard to Reades 6 paven' by Richard Reade. The score consists of four systems of six-line staves. Each system contains several measures of music, with notes represented by letters (a, b, c, d, e, f, g) and rhythmic values (1, 2, 3, 4, 5, 6). The notation includes various lute-specific symbols such as 'f' for fretting, 'p' for plectrum, and 'i' for iuxta. The piece concludes with a double bar line and repeat dots. Below the main score are several empty six-line staves for practice or additional notation.

Galliard to Reades 6 paven

Richard Reade

The image displays a handwritten musical score for a Bandora piece. The score is organized into four systems, each consisting of two staves. The notation includes various rhythmic values (such as 6, 9, 12, 16, 18, 24) and clefs (treble and bass). The first system begins with a treble clef and a 3/4 time signature. The notation is dense and characteristic of early modern lute tablature. The second system contains a double bar line with repeat dots. The third system also features a double bar line with repeat dots. The fourth system concludes with a final double bar line and repeat dots. Below the main score, there are several sets of empty musical staves for practice or further notation.